



SET

SMART EARTH
TECHNOLOGIES

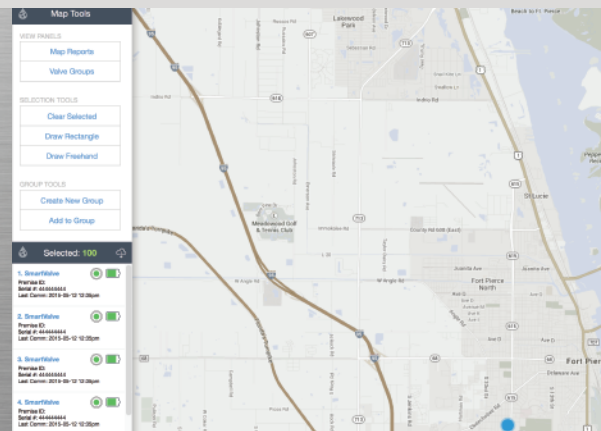
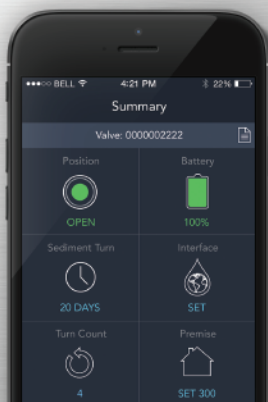




SETflow

— VALVE CONTROL —

Introducing the **SETflow™ Valve Control Platform**, featuring the SETflow™ 100 Remotely Controlled Smart Valve and Valve Control Application



MAIN FEATURES

- Remote valve control system
- Wireless Communication using Bluetooth 4.0 BLE (up to 50 meters), 3rd Party compatible AMI networks or Cellular wireless using our SETFlow 100C Smart Valve.
- Open, Closed, and Half turns
- Auto turn cycle functions to prevent corrosion
- Rated at 150 psi
- Replaceable Battery
- Small form factor extends lay length only 2 inches
- Chrome plated ball valve (lead free)
- NEMA 4 enclosure with IP68 compliance
- 10/15 Yr maintenance-free service life & limited warranty*

DESCRIPTION

The **SETflow Smart Valve** delivers remote control access over a cellular network, smart phone, or third-party AMR/AMI systems, to your water service lines and is fully integrated with the **SETflow Valve Control Platform**.

The **SETflow Smart Valve** allows your utility to eliminate manual shutoffs at your customer locations. It provides a safe and immediate solution for your technicians to remotely turn water service off/on at those services lines that are either difficult to reach, or where the utility is looking to reduce the costs associated with expensive truck-rolls to customer locations.

* See Warranty on p. 6



2752 E. Ponce de Leon Ave. Ste F, Decatur, GA. 30030
877-515-SMART | www.smartearthtechnologies.com

The **SETflow Smart Valve** utilizes a durable chrome plated ball valve shutoff system that is controlled by an electrically connected motor powered by a lithium battery. The motor and gear system are guaranteed to perform for 10 years in the field without error or corrosion. The lithium battery will provide up to 10 years of remote valve control and is contained within a potted solution, providing IP68 resistance to water and other elements.

The minimal mechanical functions of the **SETflow Smart Valve** insures that your smart valve will continue to operate for the life of the product and allow for quick and flexible installation options by adding only 2 additional inches to your standard lay lengths.



Environmental

IP68 Rating
NEMA 4 Enclosure
Operating Temperature
32F to 130F

Battery

10 Year Service Life w/
cellular connection
15 Year Service Life w/
Itron 100W+ connection

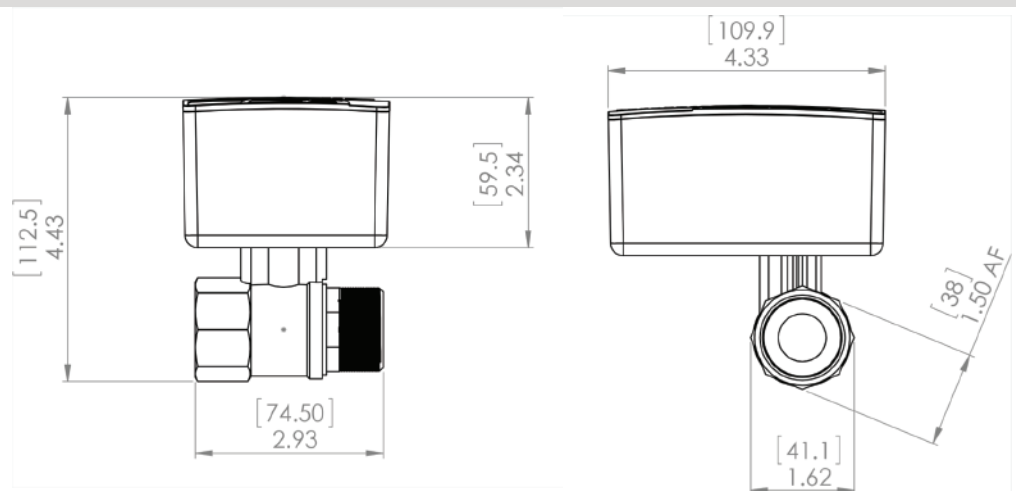
Operating Pressure

150 psi (max)

Options

1/2", 5/8", 3/4", & 1"

DIMENSIONS



RELIABILITY SPECIFICATIONS

The **SETflow™ 100 Smart Valve** can be controlled using either the **SETflow™ Valve Control Mobile App** or the **SETflow™ Enterprise Cloud**.

SETFLOW™ VALVE CONTROL MOBILE APP

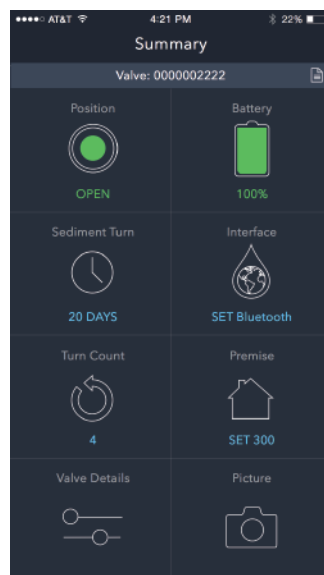
The Mobile Platform uses common handheld smartphone and tablet devices such as Apple iPhone & iPod, which run our **SETflow Valve Control Mobile App**, to wirelessly communicate with the Smart Valve using the embedded Bluetooth 4.0 radio transceiver.

Each of these Mobile devices store all Valve Control activity that occurs in the field and upon connecting to either a WiFi or cellular data network, the Mobile device synchronizes all stored data with the Enterprise Platform for monitoring Valves from your central office.

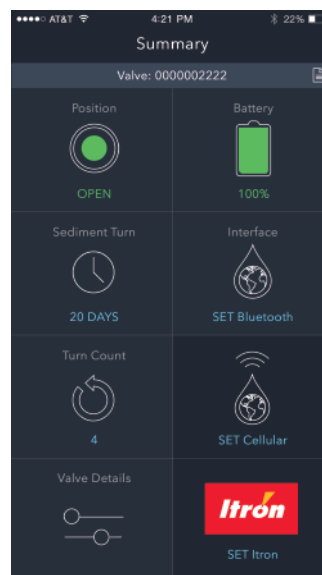
If you are using a smart device connected to a cellular network then all valve actions will be automatically synchronized, in real-time, to your utility billing and customer management system through the cellular network.

Further, using the Mobile device's built-in GPS receiver also allows your team to keep track of when and where your technicians are performing valve orders.

The SETflow Valve Control app allows for easy access to your gas or water valves



The SETflow Valve Control app supports cellular and third-party control



SETflow™ Valve Control Mobile Application

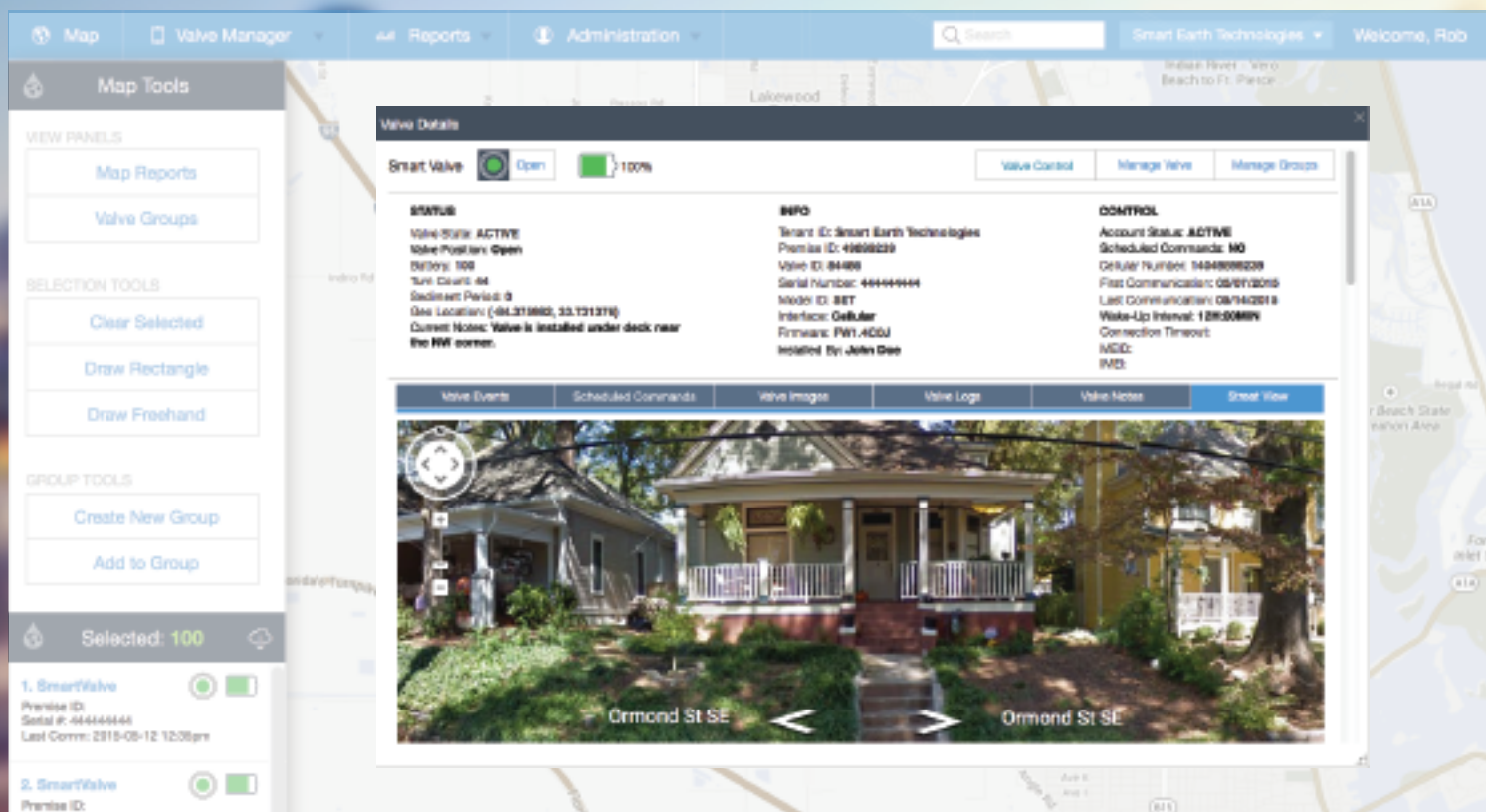


2752 E. Ponce de Leon Ave. Ste F, Decatur, GA. 30030
877-515-SMART | www.smartearthtechnologies.com

SETflow™ ENTERPRISE CLOUD

The Enterprise Platform allows you monitor the status and location of all **SETflow Smart Valves** installed across your utility and also allows you to remotely control the **SETflow 100C – Cellular Valve model**.

Using the Cellular Valve, you can control both individual Smart Valves as well as creating and controlling custom groupings of Smart Valves. You can locate Smart Valves by Valve ID or Customer ID, gain immediate access to the complete history of your Smart Valves including when they were last turned, battery levels, and much more.



The SETflow™ Enterprise Cloud Web Portal

10-YEAR LIMITED WARRANTY

VALVE CONTROL EQUIPMENT. As used herein "Valve Control Equipment" means the remote disconnect valves and components thereof as delivered to Purchaser by SET herewith, the components of each remote disconnect valve being the valve body, motor, enclosure, battery (each a "SET Battery"), printed circuit board, connecting cables and installed software.

WARRANTY. SET warrants, to Purchaser only, that the Valve Control Equipment which is delivered to Purchaser herewith will be of the kind described herein and will be free of defects in workmanship or material for a period of ten (10) years from the date of initial delivery to Purchaser. Should any failure to conform to this limited warranty occur within ten (10) years after the date of the initial delivery to Purchaser, SET will, subject to your compliance with SET's notification and substantiation procedures described below, correct such defect(s) by suitable repair or replacement of the defective Valve Control Equipment or component thereof at the applicable SET Expense Commitment as set forth in the table below. This limited warranty is exclusive and is in lieu of any implied warranty of merchantability, fitness for a particular purpose or other warranty of quality, whether expressed or implied. Correction of non-conformities, in the manner and for the period of time provided herein, shall constitute fulfillment of all liabilities of SET to Purchaser, with respect to the Valve Control Equipment, whether based on contract, negligence, strict tort or otherwise.

It is the intention of SET that no warranty of any kind, whether expressed or implied shall pass through Purchaser to any other person or entity.

SET shall be responsible for the following percentages of the aggregate cost of the repair or replacement of any Valve Control Equipment to which this limited warranty applies (the "SET Expense Commitment"):

<u>Warranty Period</u>	<u>SET Expense Commitment</u>
0-5 Years	100% replacement
5-6 Years	70% replacement
6-7 Years	60% replacement
7-8 Years	50% replacement
8-9 Years	40% replacement
9-10 Years	30% replacement

WARRANTY EXCLUSIONS. This limited warranty does not cover any Valve Control Equipment that has not been stored, installed, maintained and operated in accordance with both SET's maintenance requirements and standard industry practice, including, without limitation, the requirement that the remote disconnect valve must be rotated at least once every one hundred twenty (120) days in accordance with the Sediment Turn default as programmed in the Valve Control software. Furthermore, this limited warranty shall not apply to any Valve Control Equipment that is damaged due to abuse, neglect, misuse, fire, accident, collision, explosion, theft, overcharging, alteration, improper installation, use of special additives, or any unauthorized attempt to repair.

NOTIFICATION AND SUBSTANTIATION OF WARRANTY CLAIM. If Purchaser believes that any defect in workmanship and/or materials appears within the ten (10) year limited warranty period to any Valve Control Equipment to which this warranty applies, Purchaser shall notify SET in writing of such claim and shall deliver the subject Valve Control Equipment to SET, at the address below, for testing and substantiation of such claim to SET's reasonable satisfaction.

LIMITATION OF LIABILITY. SET shall not under any circumstances be liable for special or consequential damages such as, but not limited to, damages or to loss of property or equipment other than Valve Control Equipment, loss of profits or revenue, cost of capital, cost of purchased or replacement goods, or claims of customers of Purchaser. The remedies of Purchaser, and any and all others, set forth herein are exclusive, and the liability of SET with respect to same shall not exceed the price of the Valve Control Equipment upon which such liability is based. It is Purchaser's and/or Purchaser's customers' responsibility to confirm that the Valve Control Equipment satisfies local codes and standards.





SET

SMART EARTH
TECHNOLOGIES



2752 E. Ponce de Leon Ave. Ste F, Decatur, GA. 30030
877-515-SMART | www.smartearthtechnologies.com